

DEDON

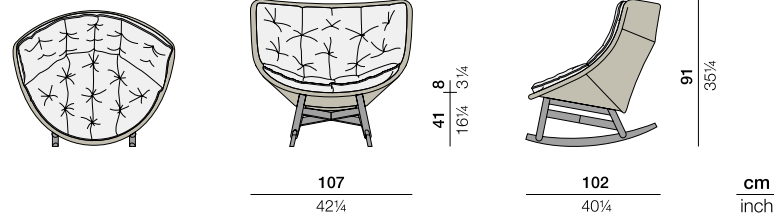
MBRACE

MBRACE

Rocking chair

Design by **Sebastian Herkner** | Item code: **085008** | Weight **9,9 kg/22 lbs** | Volume **1,01 m³/36 cu ft** | COM (Customer Own Material): **1,83 m/2.25 yd** (plain fabric only)

Measurements



Collection: MBRACE by Sebastian Herkner takes a joyfully unconventional approach to poolside furniture, bringing DEDON fiber seating and a solid teak base together for the very first time. The result is an eye-catching, instantly likable collection for lounging, dining and more. MBRACE captures the spirit of barefoot luxury while extending the DEDON design language into new, more Nordic territory.

Characteristics: Friendly, engaging, embracing, innovative, exceptionally comfortable

Rocking chair: This wing-back rocking chair features a triaxial open-weave seat, a solid-teak base and a choice of comfortable cushions.

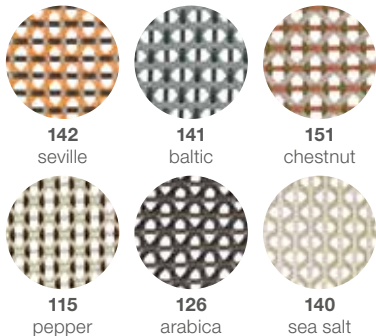
Material: The MBRACE seats are made of DEDON fiber woven over an aluminum frame. The base consists of premium teak.

Frame maintenance: Clean with a soft cloth or brush, warm water and a gentle cleanser, if needed. Wash the teak base using DEDON teak cleaner. To retain the golden-brown color of unweathered teak, we recommend applying DEDON teak oil at least once in every six months.

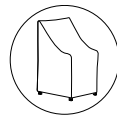
Cushion maintenance: While the covers cannot be removed, the complete cushions may be washed by hand at 30 °C / 86 °F.

Options: This item is also available with a headrest cushion.

Fibers



Additional items



Cover

56085008000

Cushions

Cushion: **95085004 + fabric code**

B 105 T 140 H 8 cm

W 41½" D 55" H 3¼"

Seat cushion: **95085016 + fabric code**

B 95 T 65 H 8 cm

W 37½" D 25½" H 3¼"

Headrest cushion: **95085005 + fabric code**

B 44 T 27 H 7,5 cm

W 37½" D 25½" H 3"

Please see fabric options fact sheet

To learn more about DEDON, our collections and warranty policy, please visit our website –

www.dedon.de

07/21

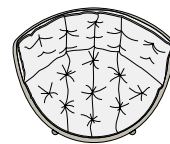
DEDON

MBRACE

Wing chair

Design by **Sebastian Herkner** | Item code: **085004** | Weight **8,6 kg/19 lbs** | Volume **0,92 m³/33 cu ft** | COM (Customer Own Material): **1,83 m/2.25 yd** (plain fabric only)

Measurements



107
42¼

95 8
13¾ 3¼

89
35

97
38¼
cm
inch

Collection: MBRACE by Sebastian Herkner takes a joyfully unconventional approach to poolside furniture, bringing DEDON fiber seating and a solid teak base together for the very first time. The result is an eye-catching, instantly likable collection for lounging, dining and more. MBRACE captures the spirit of barefoot luxury while extending the DEDON design language into new, more Nordic territory.

Characteristics: Friendly, engaging, embracing, innovative, exceptionally comfortable

Wing chair: This wing-back lounge features a triaxial open-weave seat, a solid-teak base and a choice of comfortable cushions.

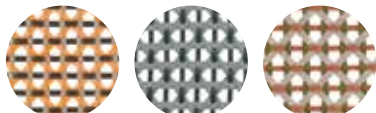
Material: The MBRACE seats are made of DEDON fiber woven over an aluminum frame. The base consists of premium teak.

Frame maintenance: Clean with a soft cloth or brush, warm water and a gentle cleanser, if needed. Wash the teak base using DEDON teak cleaner. To retain the golden-brown color of unweathered teak, we recommend applying DEDON teak oil at least once in every six months.

Cushion maintenance: While the covers cannot be removed, the complete cushions may be washed by hand at 30 °C / 86 °F.

Options: This item is also available with a headrest cushion.

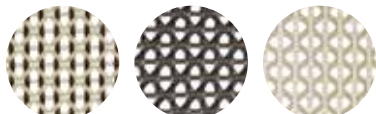
Fibers



142
seville

141
baltic

151
chestnut

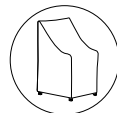


115
pepper

126
arabica

140
sea salt

Additional items



Cover

56085005000

Cushions

Cushion: **95085004 + fabric code**

B 105 T 140 H 8 cm

W 41½" D 55" H 3¼"

Seat cushion: **95085016 + fabric code**

B 95 T 65 H 8 cm

W 37½" D 25½" H 3¼"

Headrest cushion: **95085005 + fabric code**

B 44 T 27 H 7,5 cm

W 37½" D 25½" H 3"

Please see fabric options fact sheet

To learn more about DEDON, our collections and warranty policy, please visit our website –

www.dedon.de

07/21

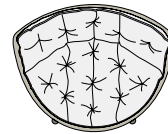
DEDON

MBRACE

Lounge chair

Design by **Sebastian Herkner** | Item code: **085006** | Weight **7,5 kg/17 lbs** | Volume **0,71 m³/25 cu ft** | COM (Customer Own Material): **1,83 m/2.25 yd** (plain fabric only)

Measurements



107
42¼

35
13¾

84
33

78
30¾

cm
inch

Collection: MBRACE by Sebastian Herkner takes a joyfully unconventional approach to poolside furniture, bringing DEDON fiber seating and a solid teak base together for the very first time. The result is an eye-catching, instantly likable collection for lounging, dining and more. MBRACE captures the spirit of barefoot luxury while extending the DEDON design language into new, more Nordic territory.

Characteristics: Friendly, engaging, embracing, innovative, exceptionally comfortable

Lounge chair: This low-back lounge features a triaxial open-weave seat, a solid-teak base and a choice of comfortable cushions.

Material: The MBRACE seats are made of DEDON fiber woven over an aluminum frame. The base consists of premium teak.

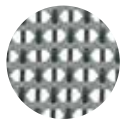
Frame maintenance: Clean with a soft cloth or brush, warm water and a gentle cleanser, if needed. Wash the teak base using DEDON teak cleaner. To retain the golden-brown color of unweathered teak, we recommend applying DEDON teak oil at least once in every six months.

Cushion maintenance: While the covers cannot be removed, the complete cushions may be washed by hand at 30 °C / 86 °F.

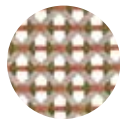
Fibers



142
seville



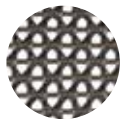
141
baltic



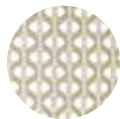
151
chestnut



115
pepper

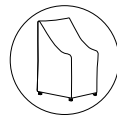


126
arabica



140
sea salt

Additional items



Cover

56085006000

Cushions

Cushion: **95085006 + fabric code**

B 110 T 115 H 8 cm

W 43¼" D 45¼" H 3¼"

Seat cushion: **95085016 + fabric code**

B 95 T 65 H 8 cm

W 37½" D 25½" H 3¼"

Please see fabric options fact sheet

To learn more about DEDON, our collections and warranty policy, please visit our website –

www.dedon.de

07/21

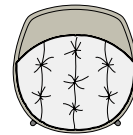
DEDON

MBRACE

Club chair

Design by **Sebastian Herkner** | Item code: **085010** | Weight **6,7 kg/14,8 lbs** | COM (Customer Own Material): **1,57 m/1.72 yd** (plain fabric only)

Measurements



82,5
32½

8
3¼

14

85,5
33¾

73,5
29

cm
inch



Collection: MBRACE by Sebastian Herkner takes a joyfully unconventional approach to poolside furniture, bringing DEDON fiber seating and a solid teak base together for the very first time. The result is an eye-catching, instantly likable collection for lounging, dining and more. MBRACE captures the spirit of barefoot luxury while extending the DEDON design language into new, more Nordic territory.

Characteristics: Friendly, engaging, embracing, innovative, exceptionally comfortable

Material: The MBRACE seats are made of DEDON fiber woven over an aluminum frame.

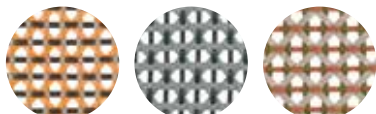
The base consists of premium teak.

Finishing: The seat frame is electrostatic powder-coated in a color similar to that of the fiber.

Frame maintenance: Clean with a soft cloth or brush, warm water and a gentle cleanser, if needed. Wash the teak base using DEDON teak cleaner. To retain the golden-brown color of unweathered teak, we recommend applying DEDON teak oil at least once in every six months.

Cushion maintenance: While the covers cannot be removed, the complete cushions may be washed by hand at 30 °C / 86 °F.

Fibers



142

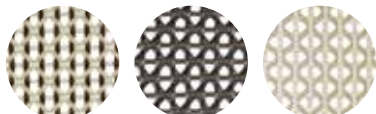
seville

141

baltic

151

chestnut



115

pepper

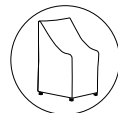
126

arabica

140

sea salt

Additional items



Cover

560850010000

Cushions

Cushion: **95085010 + fabric code**

Seat cushion

B 83 T 63 H 8 cm

W 32¾" D 25" H 3¼"

Please see fabric options fact sheet

To learn more about DEDON, our collections and warranty policy, please visit our website –

www.dedon.de

07/21

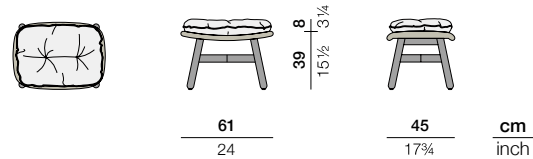
DEDON

MBRACE

Footstool

Design by **Sebastian Herkner** | Item code: **085032** | Weight **3,8 kg/9 lbs** | Volume **0,11 m³/4 cu ft** | COM (Customer Own Material): **0,75 m/1.50 yd** (plain fabric only)

Measurements



Collection: MBRACE by Sebastian Herkner takes a joyfully unconventional approach to poolside furniture, bringing DEDON fiber seating and a solid teak base together for the very first time. The result is an eye-catching, instantly likable collection for lounging, dining and more. MBRACE captures the spirit of barefoot luxury while extending the DEDON design language into new, more Nordic territory.

Characteristics: Friendly, engaging, embracing, innovative, exceptionally comfortable

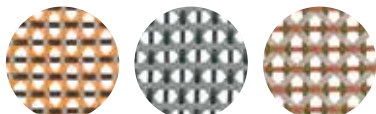
Footstool: Featuring a triaxial open-weave top and a solid-teak base, the MBRACE footstool goes perfectly with all three chairs in the collection.

Material: The MBRACE seats are made of DEDON fiber woven over an aluminum frame. The base consists of premium teak.

Frame maintenance: Clean with a soft cloth or brush, warm water and a gentle cleanser, if needed. Wash the teak base using DEDON teak cleaner. To retain the golden-brown color of unweathered teak, we recommend applying DEDON teak oil at least once in every six months.

Cushion maintenance: While the covers cannot be removed, the complete cushions may be washed by hand at 30 °C / 86 °F.

Fibers



142

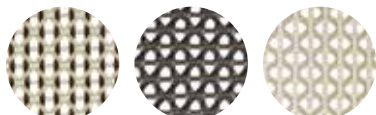
seville

141

baltic

151

chestnut



115

pepper

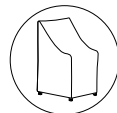
126

arabica

140

sea salt

Additional items



Cover

56085032000

Cushion

Cushion: **95085032 + fabric code**

B 62 T 45 H 8 cm

W 24½" D 17¾" H 3¼"

Please see fabric options fact sheet

To learn more about DEDON, our collections and warranty policy, please visit our website –

www.dedon.de

07/21

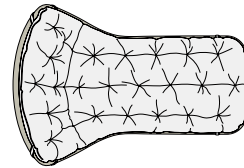
DEDON

MBRACE

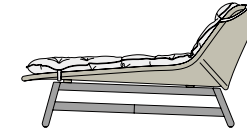
Daybed

Design by **Sebastian Herkner** | Item code: **085018** | Weight **14,4 kg/32 lbs** | Volume **1,35 m³/48 cu ft** | COM (Customer Own Material): **4,25 m/5,25 yd** (plain fabric only)

Measurements



35
8
13¾
3¼



80
31½

115
41¾

190
62½

cm
inch

Collection: MBRACE by Sebastian Herkner takes a joyfully unconventional approach to poolside furniture, bringing DEDON fiber seating and a solid teak base together for the very first time. The result is an eye-catching, instantly likable collection for lounging, dining and more. MBRACE captures the spirit of barefoot luxury while extending the DEDON design language into new, more Nordic territory.

Characteristics: Friendly, engaging, embracing, innovative, exceptionally comfortable

Daybed: This luxurious daybed has a distinctive organic form that echoes the design of the MBRACE loungers.

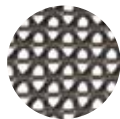
Featuring cosy cushions and an open triaxial weave, it offers the possibility of sitting and lying in different positions.

Material: The MBRACE seats are made of DEDON fiber woven over an aluminum frame. The base consists of premium teak.

Frame maintenance: Clean with a soft cloth or brush, warm water and a gentle cleanser, if needed. Wash the teak base using DEDON teak cleaner. To retain the golden-brown color of unweathered teak, we recommend applying DEDON teak oil at least once in every six months.

Cushion maintenance: While the covers cannot be removed, the complete cushions may be washed by hand at 30 °C / 86 °F.

Fibers

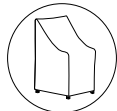


126
arabica



115
pepper

Additional items



Cover

56085018000

Cushion

Cushion: **95085018+** fabric code

B 190 T 115 H 8 cm

W 74¾" D 45¼" H 5 1/2"

Please see fabric options fact sheet

To learn more about DEDON, our collections and warranty policy, please visit our website –

www.dedon.de

07/21

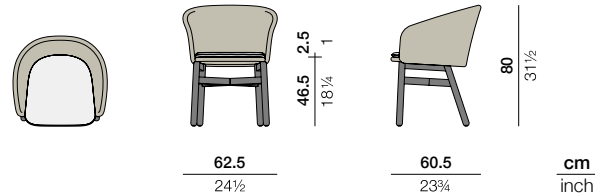
DEDON

MBRACE

Armchair

Design by **Sebastian Herkner** | Item code: **085001** | Weight **5,6 kg/13 lbs** | Volume **0,3 m³/11 cu ft** | COM (Customer Own Material): **0,58 M/0,75 yd** (plain fabric only)

Measurements



Collection: MBRACE by Sebastian Herkner takes a joyfully unconventional approach to poolside furniture, bringing DEDON fiber seating and a solid teak base together for the very first time. The result is an eye-catching, instantly likable collection for lounging, dining and more. MBRACE captures the spirit of barefoot luxury while extending the DEDON design language into new, more Nordic territory.

Characteristics: Friendly, engaging, embracing, innovative, exceptionally comfortable

Armchair: Bringing the shape, sensibility and material mix of the MBRACE loungers into dining, this distinctive chair cocoons users in cosy comfort while offering exceptional value.

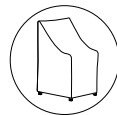
Frame: Material: The MBRACE seats are made of DEDON fiber woven over an aluminum frame. The base consists of premium teak.

Frame maintenance: Clean with a soft cloth or brush, warm water and a gentle cleanser, if needed. Wash the teak base using DEDON teak cleaner. To retain the golden-brown color of unweathered teak, we recommend applying DEDON teak oil at least once in every six months.

Fibers



Additional items



Cover

56085005000

Cushions

Seat cushion: **95085001 + fabric code**

B 46,5 T 46,5 H 2,5 cm
W 18¼" D 18¼" H 1"

Optional back cushion: **95103002 + fabric code**

B 46 T 40 H 14 cm
W 18" D 15¾" H 5 1/2"

Please see fabric options fact sheet

To learn more about DEDON, our collections and warranty policy, please visit our website –

www.dedon.de

07/21

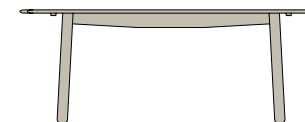
DEDON

MBRACE

Dining table 200 × 90 cm (35½" × 78¾")

Design by Sebastian Herkner | Item code: 085065 | Weight 40 kg/89 lbs | Volume 1,35 m³/48 cu ft

Measurements



75
29½

90
35½

200
78¾

cm
inch



Collection: MBRACE by Sebastian Herkner takes a joyfully unconventional approach to poolside furniture, bringing DEDON fiber seating and a solid teak base together for the very first time. The result is an eye-catching, instantly likable collection for lounging, dining and more. MBRACE captures the spirit of barefoot luxury while extending the DEDON design language into new, more Nordic territory.

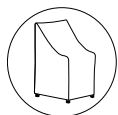
Characteristics: Friendly, engaging, embracing, innovative, handcrafted.

Dining table: With a shape reminiscent of a surfboard, this distinctive dining table of solid, slatted teak is only 90 cm (35½") deep, creating a sense of intimacy and informality that makes it unique.

Frame: This table consists of premium teak.

Maintenance: Clean with a soft cloth and warm water. Wash the teak base using DEDON teak cleaner. To retain the golden-brown color of unweathered teak, we recommend applying DEDON teak oil at least once in every six months.

Additional items



Cover

56085065000

To learn more about DEDON, our collections and warranty policy, please visit our website –

www.dedon.de

10/20

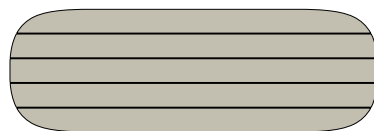
DEDON

MBRACE

Dining table 270 × 90 cm (35½" × 106¼")

Design by **Sebastian Herkner** | Item code: **085055** | Weight **51 kg/113 lbs** | Volume **1,83 m³/65 cu ft**

Measurements



90
35½



270
106¼

75
29½

cm
inch



Collection: MBRACE by Sebastian Herkner takes a joyfully unconventional approach to poolside furniture, bringing DEDON fiber seating and a solid teak base together for the very first time. The result is an eye-catching, instantly likable collection for lounging, dining and more. MBRACE captures the spirit of barefoot luxury while extending the DEDON design language into new, more Nordic territory.

Characteristics: Friendly, engaging, embracing, innovative, handcrafted.

Dining table: With a shape reminiscent of a surfboard, this distinctive dining table of solid, slatted teak is only 90 cm (35½") deep, creating a sense of intimacy and informality that makes it unique.

Frame: This table consists of premium teak.

Maintenance: Clean with a soft cloth and warm water. Wash the teak base using DEDON teak cleaner. To retain the golden-brown color of unweathered teak, we recommend applying DEDON teak oil at least once in every six months.

Additional items



Cover

56085055000

To learn more about DEDON, our collections and warranty policy, please visit our website –

www.dedon.de

10/20

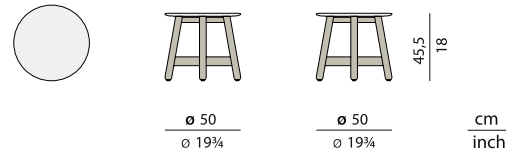
DEDON

MBRACE

Side table Ø 50 cm / Ø 19¾"

Design by **Sebastian Herkner** | Item code: **085036** | Weight **9,2 kg/20 lbs** | Volume **0,11 m³/4 cu ft**

Measurements



Collection: MBRACE brings cocooning comfort, iconic style and a modern material mix of teak and fiber to the outdoors. Sebastian Herkner's awardwinning collection takes its name from the welcoming gesture of the seating, which wraps users in a cosy embrace. Now available in Baltic, Sea Salt and four other colorways, MBRACE comprises a full range of dining and lounging elements, including coffee and side tables with handcrafted ceramic surface patterns.

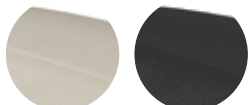
Characteristics: Friendly, engaging, embracing, innovative, handcrafted.

Side table: The side table Ø 50 cm (Ø 19¾") features a solid-teak base with a frost-proof, non-absorbent, impact-resistant ceramic tabletop in a handcrafted pattern. Available in chalk, taupe or black, the side table Ø 50 cm (Ø 19¾") combines with the MBRACE coffee tables and other side tables to create a series of overlapping tabletops.

Frame: The base consists of natural finish teak. The tabletops are made of Monolite Ipergres®, a frost-proof ceramic material.

Maintenance: Clean with a soft cloth and warm water. Wash the teak base using DEDON teak cleaner. To retain the golden-brown color of unweathered teak, we recommend applying DEDON teak oil at least once in every six months.

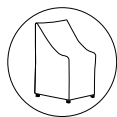
Tabletop ceramic



300
chalk

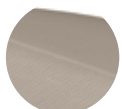
341
black

Additional items



Cover

56085036000



308
taupe

To learn more about DEDON, our collections and warranty policy, please visit our website –

www.dedon.de

10/20

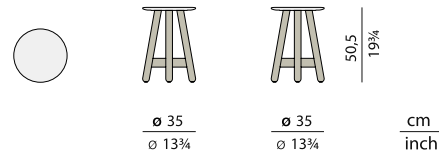
DEDON

MBRACE

Side table Ø 35 cm / Ø 13¾"

Design by **Sebastian Herkner** | Item code: **085034** | Weight **6,2kg/14 lbs** | Volume **0,06 m³/3 cu ft**

Measurements



Collection: MBRACE brings cocooning comfort, iconic style and a modern material mix of teak and fiber to the outdoors. Sebastian Herkner's award-winning collection takes its name from the welcoming gesture of the seating, which wraps users in a cosy embrace. Now available in Baltic, Sea Salt and four other colorways, MBRACE comprises a full range of dining and lounging elements, including coffee and side tables with handcrafted ceramic surface patterns.

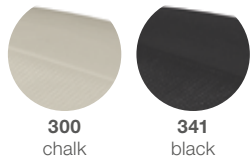
Characteristics: Friendly, engaging, embracing, innovative, handcrafted.

Side table: The side table Ø 35 cm (Ø 13¾") features a solid-teak base with a frost-proof, non-absorbent, impact-resistant ceramic tabletop in a handcrafted pattern. Available in chalk, taupe or black, the side table Ø 35 cm (Ø 13¾") combines with the MBRACE coffee tables and other side tables to create a series of overlapping tabletops.

Frame: The base consists of natural finish teak. The tabletops are made of Monolite Ipergres®, a frost-proof ceramic material.

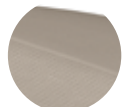
Maintenance: Clean with a soft cloth and warm water. Wash the teak base using DEDON teak cleaner. To retain the golden-brown color of unweathered teak, we recommend applying DEDON teak oil at least once in every six months.

Tabletop ceramic



300
chalk

341
black



308
taupe

Additional items



Cover

56085034000

To learn more about DEDON, our collections and warranty policy, please visit our website –

www.dedon.de

10/20

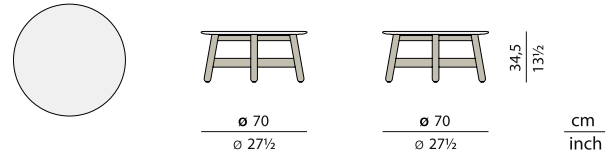
DEDON

MBRACE

Coffee table Ø 70 cm / Ø 27½"

Design by Sebastian Herkner | Item code: 085038 | Weight 17,2 kg/38 lbs | Volume 0,17 m³/3 cu ft

Measurements



Collection: MBRACE brings cocooning comfort, iconic style and a modern material mix of teak and fiber to the outdoors. Sebastian Herkner's award-winning collection takes its name from the welcoming gesture of the seating, which wraps users in a cosy embrace. Now available in Baltic, Sea Salt and four other colorways, MBRACE comprises a full range of dining and lounging elements, including coffee and side tables with handcrafted ceramic surface patterns.

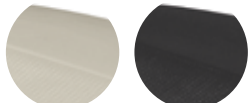
Characteristics: Friendly, engaging, embracing, innovative, handcrafted.

Coffee table: The coffee table Ø 70 cm (Ø 27½") features a solid-teak base with a frost-proof, non-absorbent, impact-resistant ceramic tabletop in a handcrafted pattern. Available in chalk, taupe or black, the coffee table Ø 70 cm (Ø 27½") combines with the MBRACE coffee tables and other side tables to create a series of overlapping tabletops.

Frame: The base consists of natural finish teak. The tabletops are made of Monolite Ipergres®, a frost-proof ceramic material.

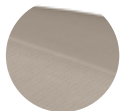
Maintenance: Clean with a soft cloth and warm water. Wash the teak base using DEDON teak cleaner. To retain the golden-brown color of unweathered teak, we recommend applying DEDON teak oil at least once in every six months.

Tabletop ceramic



300
chalk

341
black



308
taupe

Additional items



Cover

56085038000

To learn more about DEDON, our collections and warranty policy, please visit our website –

www.dedon.de

10/20

DEDON